

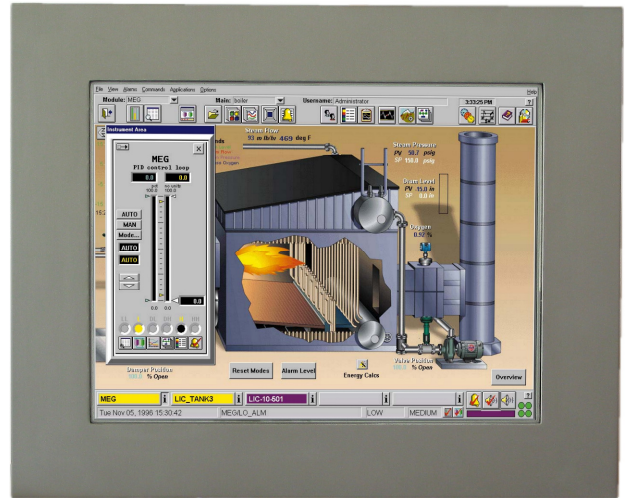


| Contents: | Page |
|---------------------------------------|-------------|
| 1 General | 4 |
| 2 Technical data 5 | |
| 3 Power Supply | 6 |
| 3.1 Monitor with 12 VDC power supply | |
| 3.2 Monitor with 24 VDC power supply | |
| 3.3 Monitor with 230 VAC power supply | |
| 4 Backside Monitor | 7 |
| 5 OSD Menu | 7 |
| 5.1 Picture | 8 |
| Adjust of the backlight | |
| Adjust the brightness | |
| Contrast setting | |
| Adjust the Sharpness | |
| 5.2 Display | 9 |
| Optimal picture adjustment | |
| H. position | |
| V. position | |
| Pixel clock | |
| Phase | |
| 5.3 Color | 10 |
| Gamma value | |
| Color Temp | |
| Color Effect | |
| Color Demo | |
| Color Format | |
| Hue | |
| Saturation | |
| 5.4 Advance | 11 |
| Aspect Ratio | |
| Overscan | |
| DDCCI | |
| Ultra Vivid | |
| 5.5 Input | 12 |
| VGA / DVI / DP | |
| 5.6 Other | 13 |
| Reset | |
| Menu Time | |
| OSD H Position | |
| OSD V Position | |
| Language | |
| Transparency | |
| Rotate | |
| 5.7 Information | 14 |

| Contents: | Page |
|---|-------------|
| 6 Touch Screen | 15 |
| 7 Monitor care | 16 |
| 8 Screensaver | 16 |
| 9 security | 16 |
| 10 Mechanical dimensions | 17 |
| 10.1 Monitor with Standard or Stainless Steel Front Plate | 17 |
| 10.2 Monitor with 19" Front Plate | |
| 11 Front panel cutout monitor with Standard or stainless steel front plate | 18 |
| Notes | 19 |

1 - General

The monitor has a 10,4 "TFT display with a resolution of 800 x 600 or 1024 x 768 pixels. The connection to the PC takes place via a VGA interface with 15-pin VGA plug or via a DVI interface with DVI-I Dual Link plug (24 + 1 pin) or the display port for the transmission of digital image signals. Optionally, the monitor can be equipped with a resistive touch screen. The touch has a USB interface.



Monitor with stainless steel front plate

If the monitor is equipped without a touch, the display is protected against contact and contact with moisture and aggressive substances through a glass. There is a standard protective glass and a visually anti-glare protective glass available.

The monitor is available with a standard or stainless steel front plate and mounting bolts on the back. These two versions are intended for installation in a control cabinet or control panel. The front panel has a gasket. The degree of protection is IP 65.



The monitors have a standard 12 VDC power supply and are supplied with an external 230 VAC / 12 VDC power supply. All monitors are optional with a supply voltage of 24 VDC or with an internal power supply of 230 VAC available.

Monitor Back with standard front plate and mounting bolts

2 - Technical specifications

| Technical specifications | | |
|--|---|--|
| LCD - Type | 10,4" TFT | |
| resolution (Pixel) | 800 x 600 | 1024 x 768 |
| act. screen area(mm) | 211,2 x 158,4 | 210,4 x 157,8 |
| pixel density (mm) | 0,264 x 0,264 | 0,205 x 0,205 |
| brightness (cd / m ²) | 250 | 400 |
| contrast | 400 : 1 | 1200 : 1 |
| reaction time TR/TF (msec.) | 6 / 19 | 15 / 10 |
| Colors | 262144 | 16,2 Mio |
| Angle of view horizontally vertical | R / L = 65° / 65° O / U = 55° / 55° | R / L = 88° / 88° O / U = 88° / 88° |
| Lifetime illumination (half-life) | 25.000 Std. | 50.000 Std. |
| Touch (Option) | Analog resistive touch with USB interface Resolution 1024 x 1024 (10 bits) | |
| VGA Port | SVGA | XGA |
| DVI Port | DVI I Dual Link (24 + 1 Pin Stecker) | |
| DP Port | Display Port (digital image signals) | |
| OSD - Menü | Yes | |
| supply voltage | 12 VDC optional 24 VDC (intern) optional 100 - 230 VAC (intern) | |
| power consumption | 15 W | |
| operating temperatur | 0 to 50 °C | -10 to 60 °C |
| storage temperature | -20 to 60 °C | -20 to 70 °C |
| Front Plate | Front panel black powder coated, RAL 9005, with fixing bolts Stainless steel front plate with mounting bolts | |
| Degree of protection front panel | IP 65 (Stainless steel and standard front) | |
| VESA connection | No | |
| weight | 3,0 KG | |

Reserve technical changes.

3 - Power supply

3.1 Monitor with 12 VDC power supply

The connector is located on the back of the monitor.
The inner pin is plus, the outer minus.
The inner plug has a diameter of 2.5 mm.

An external power supply unit with a supply voltage of 100 - 240 VAC / 12 VDC and 60 VA output is included in this version.



Attention: pay attention to polarity



External power supply unit 230 VAC / 12 VDC

3.2 Monitor with 24 VDC power supply

On the back there is a 3-pin screw terminal connection.
The supply voltage is 20 - 28 VDC.
The power consumption is about 40 watts.

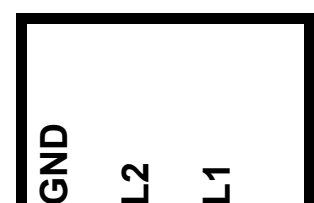
24 VDC



3.3 Monitor with 230 VAC power supply

On the back there is a 3-pin screw terminal connection.
The supply voltage is 100 - 230 VAC
The power consumption is about 40 watts.

100 - 230 VAC



4 - Monitor Back



Button OSD menu on the back of the monitor

On the back of the monitor is the power supply connector, the VGA input, the DVI input, the DP connector, the connector on the Touch if the monitor is equipped with a touch screen, and 5 buttons for adjusting the OSD menu

Die Tasten sind bezeichnet mit:

- POWER:** Monitor on / off.
- MENU:** Enable and disable the OSD menu.
- SELECT:** Confirm selection in OSD main menu or OSD submenu.
- DOWN:** Selection of icons in the main and submenu as well as setting the values.
The value to be set is lowered.
- UP:** Selection of icons in the main and submenu as well as setting the values.
The value to be set is increased.

5 - OSD Menü

After pressing the MENU button, the OSD menu is displayed as shown in the lower picture. Then you can use the UP / DOWN buttons to select the various main menus. By pressing the SELECT key, the selected main menu with the associated submenu items is selected and the submenu items can be selected using the UP / DOWN keys. These are also acknowledged with the SELECT key.

Then select the desired value with the UP / DOWN keys and confirm with SELECT. Exit various menu items by pressing the MENU key.



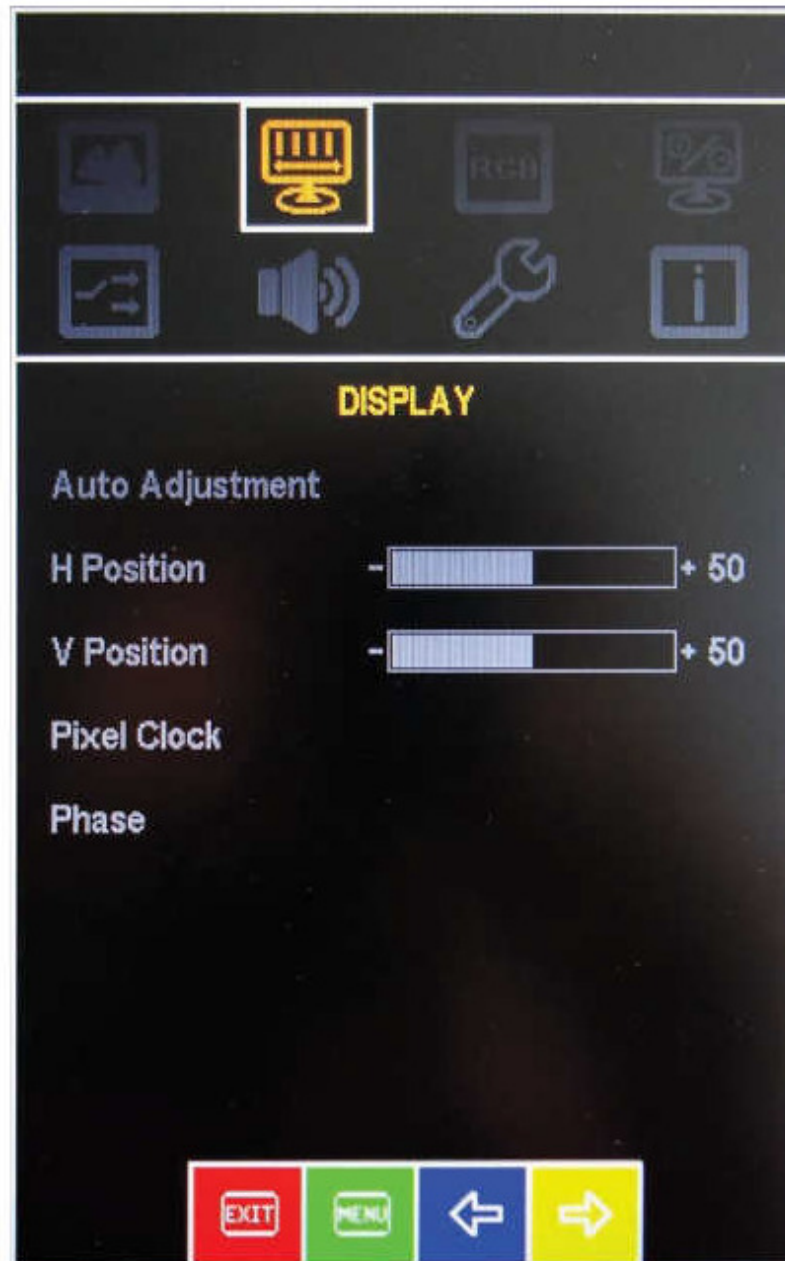
Attention: The OSD menu can only be activated when the input signal is present!

5.1 Picture



| | |
|-------------|-----------------------------|
| Backlight: | Adjustment of the backlight |
| Brightness: | Adjust the brightness |
| Contrast: | Contrast adjustment |
| Sharpness: | Adjust the focus |

5.2 Display



| | |
|------------------|--|
| Auto Adjustment: | The optimal picture setting is activated |
| H. Position: | The horizontal position can be adjusted |
| V. Position: | The vertical position can be adjusted |
| Pixel Clock: | The clock frequency can be adjusted |
| Phase: | The clock rate can be adjusted |

5.3 Color



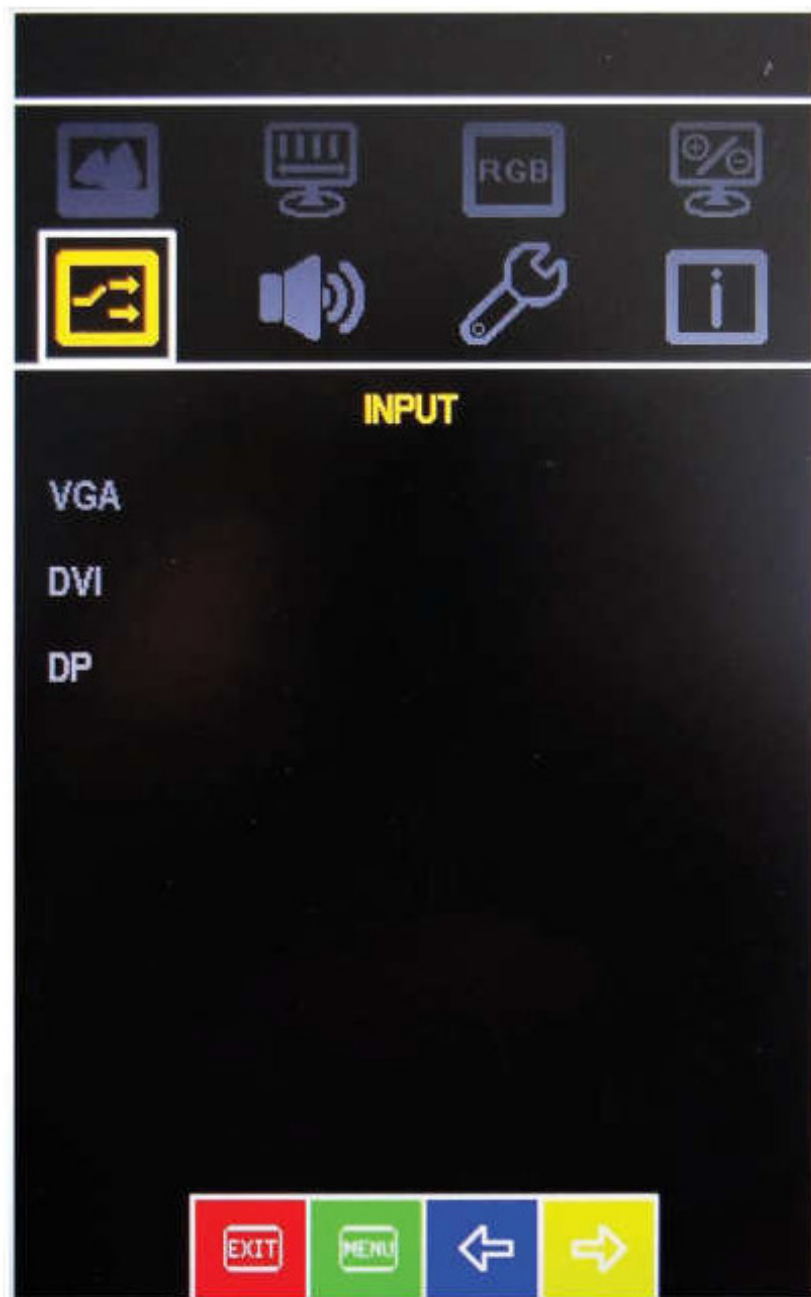
| | |
|---------------|---------------------------------------|
| Gamma: | The gamma value can be adjusted |
| Color Temp.: | The color temperature can be adjusted |
| Color Effect: | A color effect can be set |
| Color Demo: | Selection for hue and saturation |
| Color Format: | Color space selection |
| Hue: | Adjust the color balance |
| Saturation: | Adjust the saturation |

5.4 Advance



| | |
|---------------|-------------------------------|
| Aspect ratio: | Adjust aspect ratio |
| Overscan: | Overscan function on or off |
| DDCCI: | Turn DDCCI support on or off |
| Ultra Vivid: | Select the type of color mode |

5.5 Input

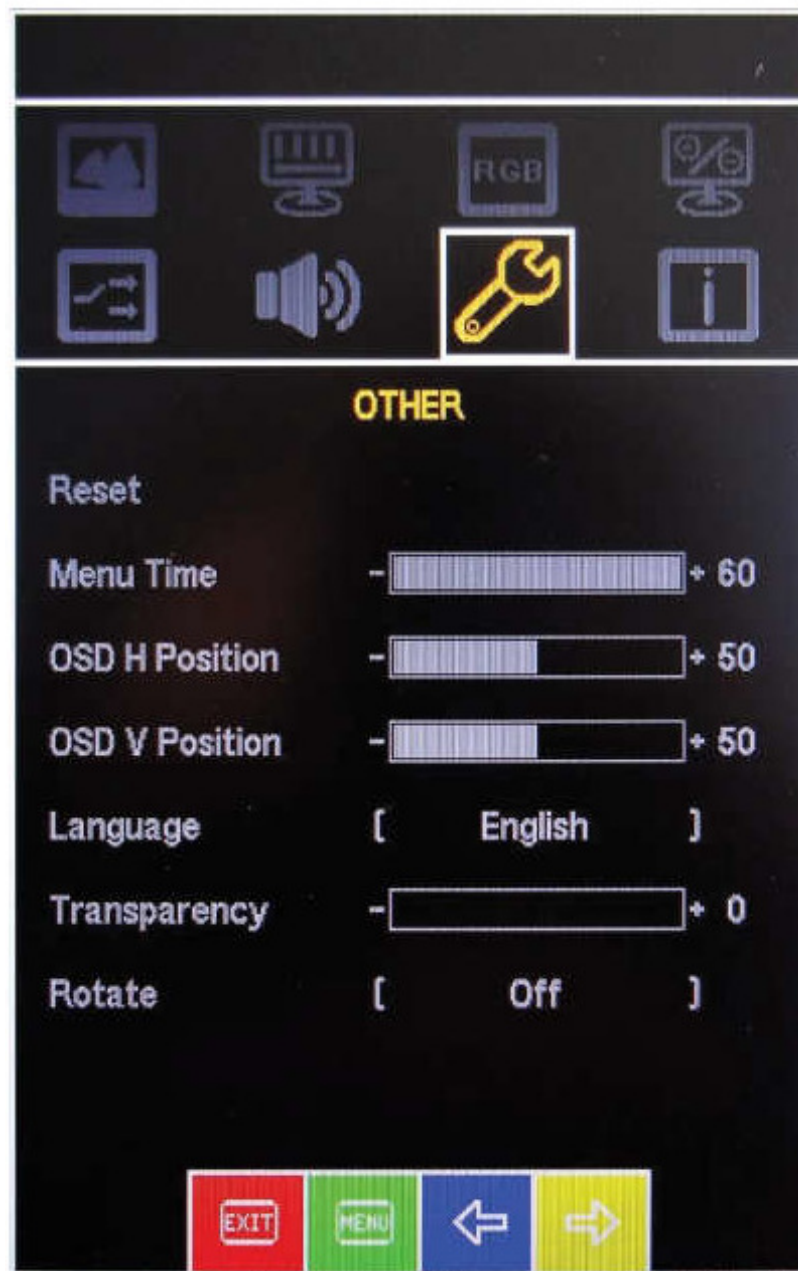


VGA: Select VGA as the input source

DVI: Select DVI as the input source

DP: Select DP as the input source

5.6 more settings



| | |
|-----------------|--------------------------------|
| Reset: | Reset to factory settings |
| Menu Time: | Presentation time OSD menu |
| OSD H Position: | Horizontal adjustment OSD menu |
| OSD V Position: | Vertikaleinstellung OSD Menü |
| Language: | Language: German or English |
| Transparencey: | Transparency OSD menu setting |
| Rotate: | Turn OSD Menu On / Off |

5.7 Information



Information about:

signal input

H and V frequency

clock speed

HDCP functional status

Firmware version

6 - Touch Screen

If the monitor is equipped with a resistive touch screen, the CD comes with the driver software for the touch screen.

When touched with a USB interface, the touch is powered by the PC.

The connection to the PC is made via a USB plug type A. The plug is located on the back of the monitor.

A connecting cable of 3 meters is included.

To install the driver software, insert the CD-ROM into the drive.

Do not connect the USB cable to the PC.

Enter D: \ Setup.exe and confirm with OK.

Instructions on the screen.

For USB interface: DMC, TSC-10 Series, select USB.

The driver software is now installed.

After completing the installation, connect the USB cable to the PC.

The New Hardware Installation Wizard appears.

When asked, "Connect to the Internet" - **NO this time** -

Select and select **Next**.

Click on "Install software automatically" and select **Next**.

When asking for verification - **continue installation** - select.

Select Finish.

Select Close.

The software and driver are now installed and the touch should be at fingertip react.

Calibrate Touch Screen Now (Start, All Programs, UPDD, Calibrate)

ATTENTION: If a different touch driver is installed on the PC, remove it completely from the PC before installation.

A not completely uninstalled driver can cause the touch does not work. If necessary, restart PC after installation.

7 - Monitor maintenance

Only clean the touch with a damp cloth!

DO NOT use a pressure washer.

Touch only with your fingers, do not use hard and sharp objects.

8 - Screensaver

Avoid displaying the same image over a long period of time.

Even with TFT monitors, this can lead to "burn in" the display.

It is called the "memory effect".

Therefore use a screensaver.

If a different picture is displayed for a longer time, the "Memory Effect" will disappear automatically.

9 - Safety

The operating voltage of the device may only be in the specified range.

The device complies with the requirements of the applicable European standards and EMC guidelines.

The front of the monitor is splash-proof.

There are ventilation slots on the back. These must remain free and it must be ensured that there is sufficient space for air circulation.

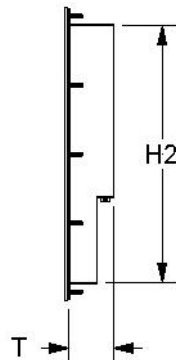
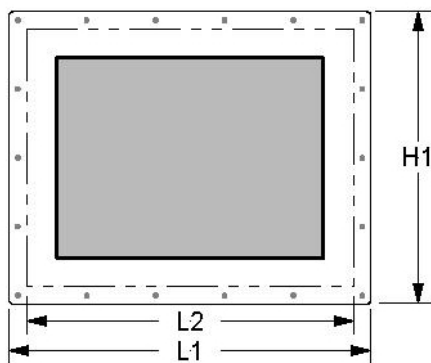
No objects should be put through the slots.

There must be no moisture or liquid in the monitor.

The monitor is not intended for use in hazardous areas.

10 - Mechanical dimensions

10.1 monitor with standard or stainless steel front plate



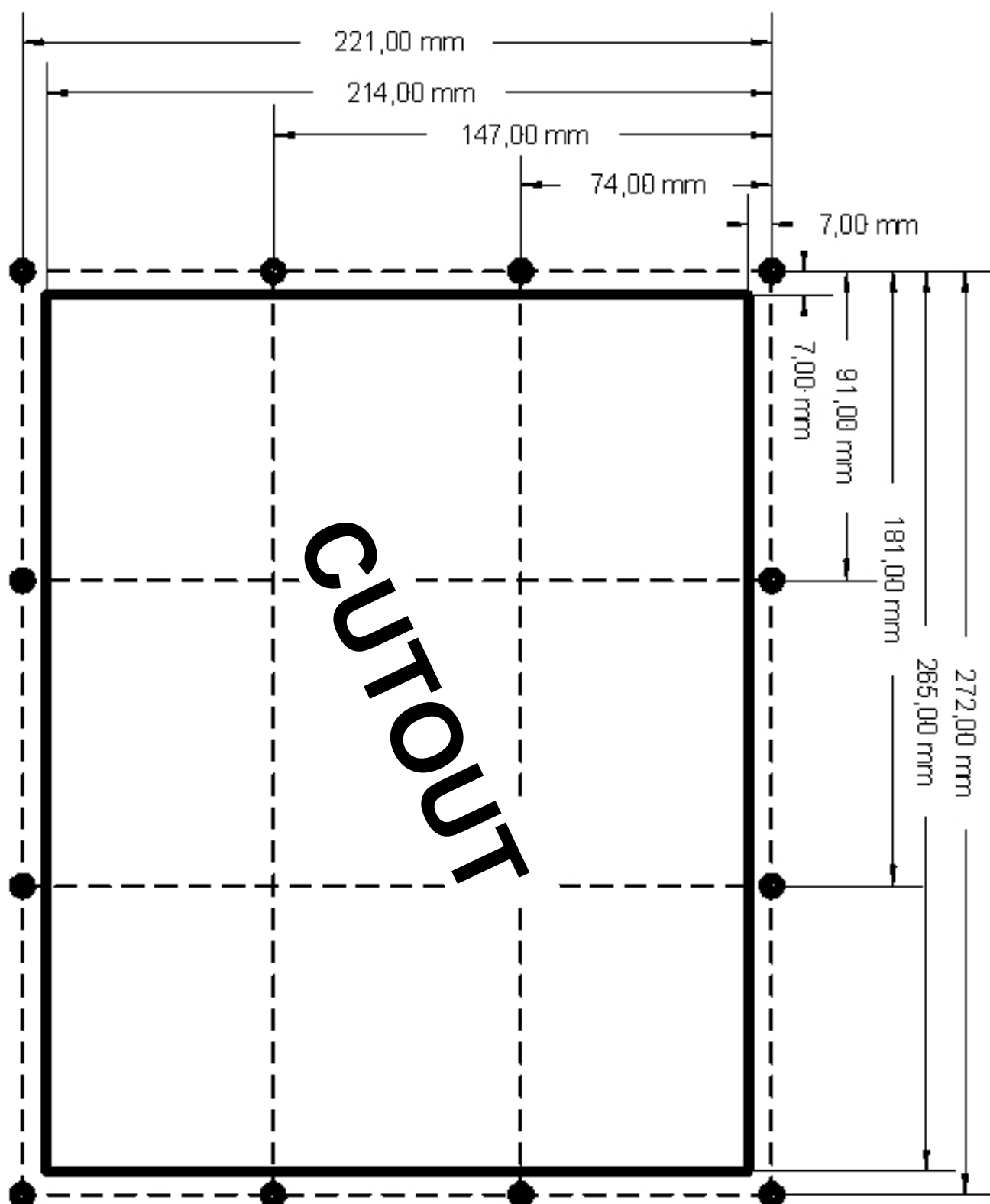
L1 = 286 mm
L2 = 256 mm
H1 = 235 mm
H2 = 305 mm
T = 50 mm

Front plate thickness = 3 mm

Cut Out: 258 x 207 mm

All dimensions in mm, technical changes reserved

11 - Front Panel Cutout Monitor with standard and stainless steel front panel



Front Panel Cutout Monitor 10,4 "
Hole = 6.5 mm

Notes:

