

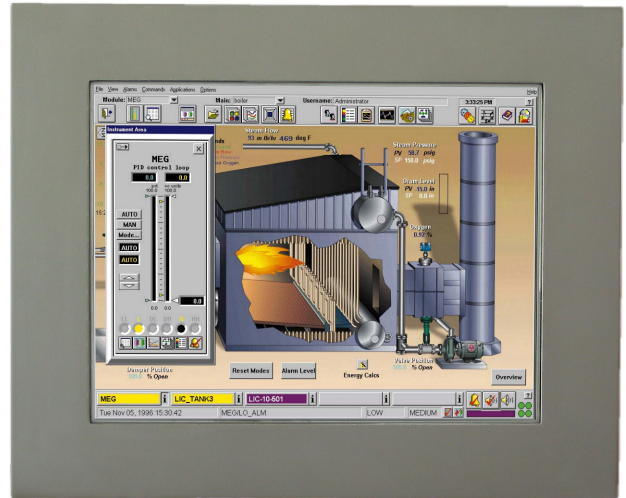


Contents:	Page
1 General	4
2 Technical data 5	
3 Power Supply	6
3.1 Monitor with 12 VDC power supply	
3.2 Monitor with 24 VDC power supply	
3.3 Monitor with 230 VAC power supply	
4 Backside Monitor	7
5 OSD Menu	7
5.1 Picture	8
Adjust of the backlight	
Adjust the brightness	
Contrast setting	
Adjust the Sharpness	
5.2 Display	9
Optimal picture adjustment	
H. position	
V. position	
Pixel clock	
Phase	
5.3 Color	10
Gamma value	
Color Temp	
Color Effect	
Color Demo	
Color Format	
Hue	
Saturation	
5.4 Advance	11
Aspect Ratio	
Overscan	
DDCCI	
Ultra Vivid	
5.5 Input	12
VGA / DVI / DP	
5.6 Other	13
Reset	
Menu Time	
OSD H Position	
OSD V Position	
Language	
Transparency	
Rotate	
5.7 Information	14

Contents:	Page
6 Touch Screen	15
7 Monitor care	16
8 Screensaver	16
9 security	16
10 Mechanical dimensions	17
10.1 Monitor with Standard or Stainless Steel Front Plate	17
10.2 Monitor with 19" Front Plate	
11 Front panel cutout monitor with Standard or stainless steel front plate	18
Notes	19

1 - General

The monitor has a 12.1" TFT display with a resolution of 800 x 600 or 1024 x 768 pixels. The connection to the PC takes place via a VGA interface with 15-pin VGA plug or via a DVI interface with DVI-I Dual Link plug (24 + 1 pin) or the display port for the transmission of digital image signals. Optionally, the monitor can be equipped with a resistive touch screen. The touch has a USB interface.



Monitor with stainless steel front plate

If the monitor is equipped without a touch, the display is protected against contact and contact with moisture and aggressive substances through a glass. There is a standard protective glass and a visually anti-glare protective glass available.

The monitor is available with a standard or stainless steel front plate and mounting bolts on the back. These two versions are intended for installation in a control cabinet or control panel. The front panel has a gasket. The degree of protection is IP 65.



The monitors have a standard 12 VDC power supply and are supplied with an external 230 VAC / 12 VDC power supply. All monitors are optional with a supply voltage of 24 VDC or with an internal power supply of 230 VAC available.

Monitor Back with standard front plate and mounting bolts

2 - Technical specifications

Technical specifications		
LCD - Type	12.1" TFT	
resolution (Pixel)	800 x 600	1024 x 768
act. screen area(mm)	246 x 184,5	245,8 x 184,3
pixel density (mm)	0,3075 x 0,3075	0,240 x 0,240
brightness (cd / m ²)	400	450
contrast	500 : 1	700 : 1
reaction time TR/TF (msec.)	10 / 15	13 / 12
Colors	262144	262144
Angle of view horizontally vertical	R / L = 65° / 65° O / U = 50° / 60°	R / L = 80° / 80° O / U = 80° / 50°
Lifetime illumination (half-life)	50.000 Std.	50.000 Std.
Touch (Option)	Analog resistive touch with USB interface	
VGA Port	SVGA	XGA
DVI Port	DVI I Dual Link (24 + 1 Pin Stecker)	
DP Port	Display Port (digital image signals)	
OSD - Menü	Yes	
supply voltage	12 VDC optional 24 VDC (intern) optional 100 - 230 VAC (intern)	
power consumption	15 W	
operating temperatur	0 to 60 °C	-30 to 70 °C
storage temperature	-25 to 70 °C	-40 to 80 °C
Front Plate	Front panel black powder coated, RAL 9005, with fixing bolts Stainless steel front plate with mounting bolts	
Degree of protection front panel	IP 65 (Stainless steel and standard front)	
VESA connection	No	
weight	4,5 KG	

Reserve technical changes.

3 - Power supply

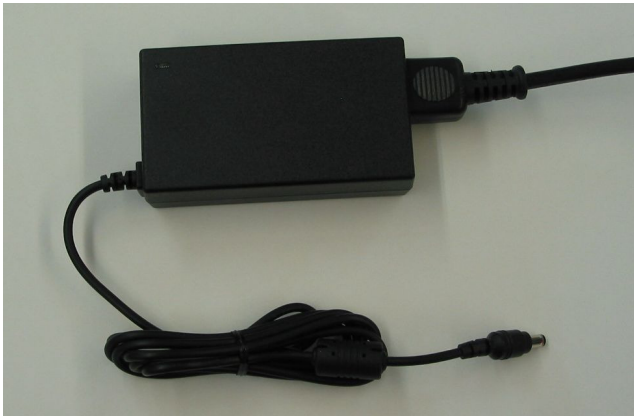
3.1 Monitor with 12 VDC power supply

The connector is located on the back of the monitor.
The inner pin is plus, the outer minus.
The inner plug has a diameter of 2.5 mm.

An external power supply unit with a supply voltage of 100 - 240 VAC / 12 VDC and 60 VA output is included in this version.



Attention: pay attention to polarity



External power supply unit 230 VAC / 12 VDC

3.2 Monitor with 24 VDC power supply

On the back there is a 3-pin screw terminal connection.
The supply voltage is 20 - 28 VDC.
The power consumption is about 40 watts.

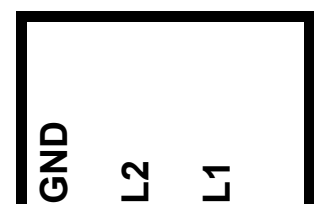
24 VDC



3.3 Monitor with 230 VAC power supply

On the back there is a 3-pin screw terminal connection.
The supply voltage is 100 - 230 VAC
The power consumption is about 40 watts.

100 - 230 VAC



4 - Monitor Back



Button OSD menu on the back of the monitor

On the back of the monitor is the power supply connector, the VGA input, the DVI input, the DP connector, the connector on the Touch if the monitor is equipped with a touch screen, and 5 buttons for adjusting the OSD menu

Die Tasten sind bezeichnet mit:

- POWER:** Monitor on / off.
- MENU:** Enable and disable the OSD menu.
- SELECT:** Confirm selection in OSD main menu or OSD submenu.
- DOWN:** Selection of icons in the main and submenu as well as setting the values.
The value to be set is lowered.
- UP:** Selection of icons in the main and submenu as well as setting the values.
The value to be set is increased.

5 - OSD Menü

After pressing the MENU button, the OSD menu is displayed as shown in the lower picture. Then you can use the UP / DOWN buttons to select the various main menus. By pressing the SELECT key, the selected main menu with the associated submenu items is selected and the submenu items can be selected using the UP / DOWN keys. These are also acknowledged with the SELECT key.

Then select the desired value with the UP / DOWN keys and confirm with SELECT. Exit various menu items by pressing the MENU key.



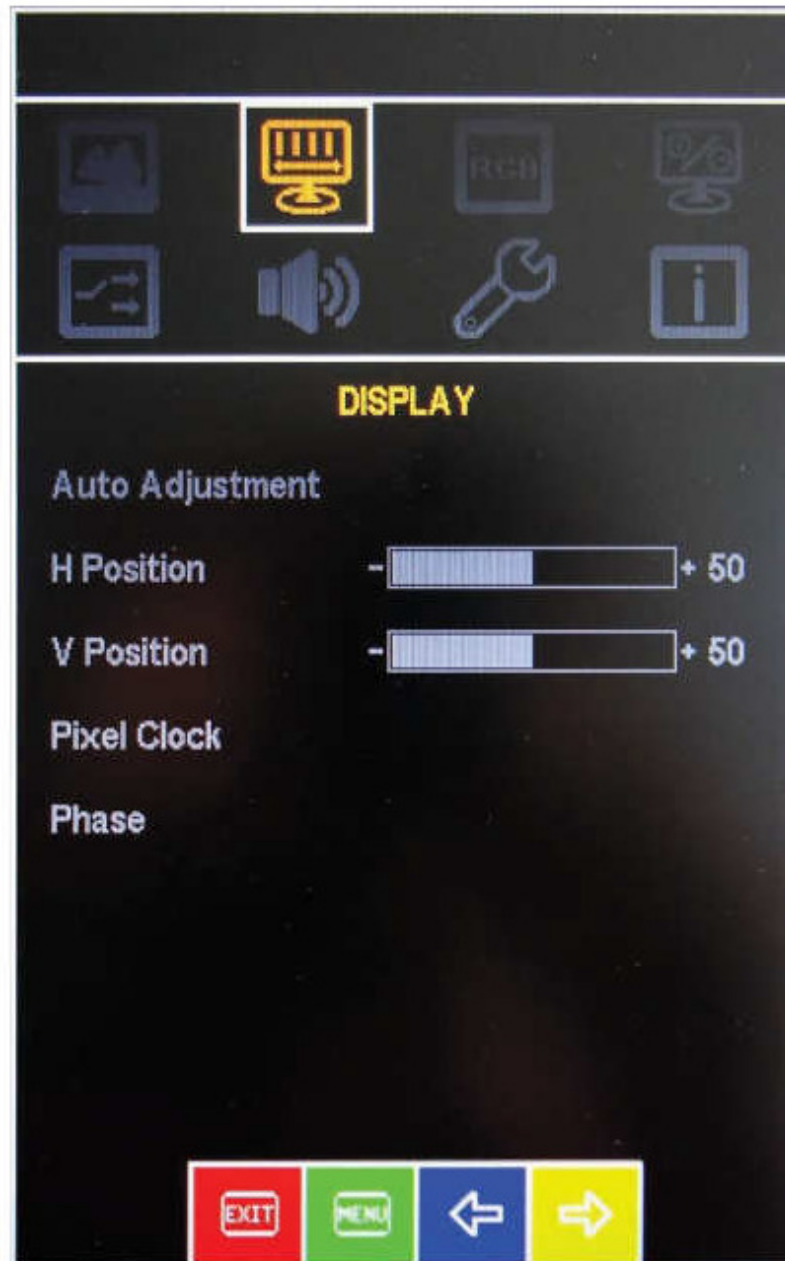
Attention: The OSD menu can only be activated when the input signal is present!

5.1 Picture



Backlight:	Adjustment of the backlight
Brightness:	Adjust the brightness
Contrast:	Contrast adjustment
Sharpness:	Adjust the focus

5.2 Display



Auto Adjustment:	The optimal picture setting is activated
H. Position:	The horizontal position can be adjusted
V. Position:	The vertical position can be adjusted
Pixel Clock:	The clock frequency can be adjusted
Phase:	The clock rate can be adjusted

5.3 Color



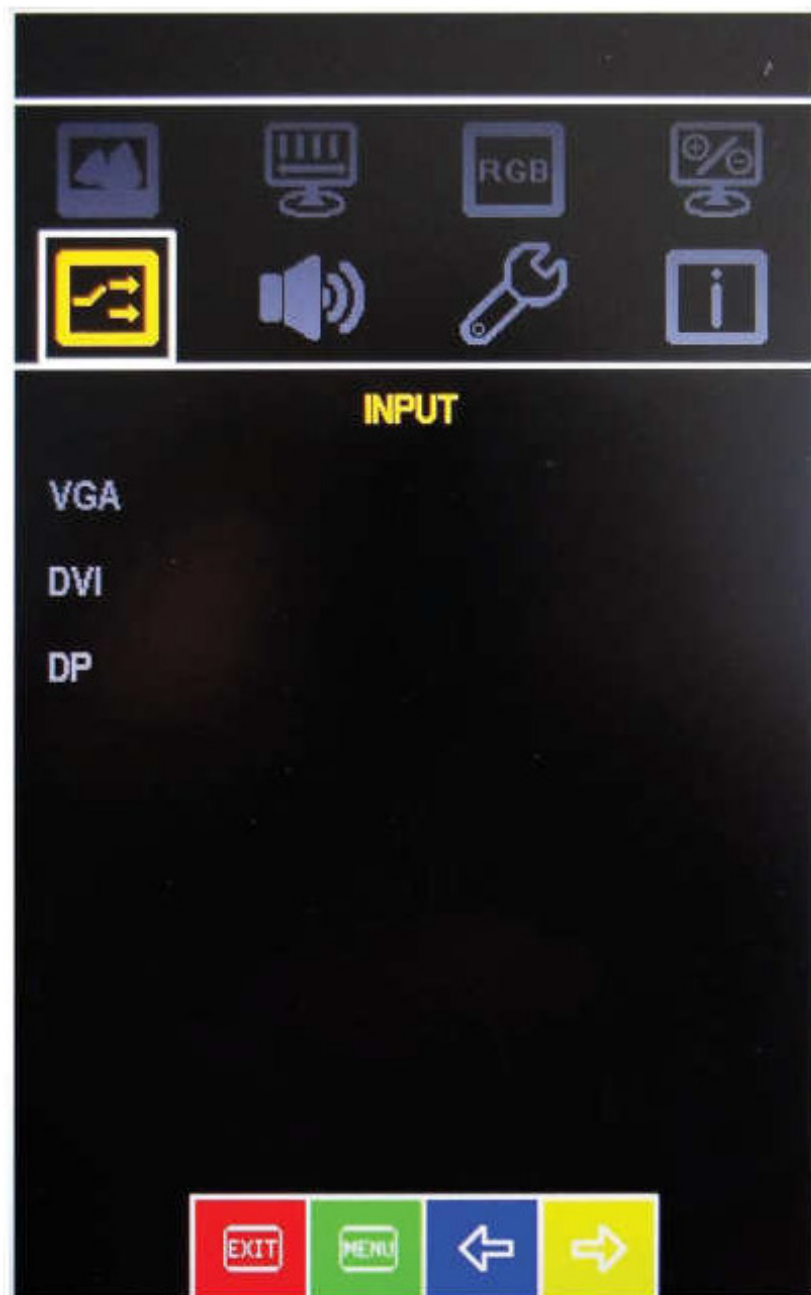
Gamma:	The gamma value can be adjusted
Color Temp.:	The color temperature can be adjusted
Color Effect:	A color effect can be set
Color Demo:	Selection for hue and saturation
Color Format:	Color space selection
Hue:	Adjust the color balance
Saturation:	Adjust the saturation

5.4 Advance



Aspect ratio:	Adjust aspect ratio
Overscan:	Overscan function on or off
DDCCI:	Turn DDCCI support on or off
Ultra Vivid:	Select the type of color mode

5.5 Input

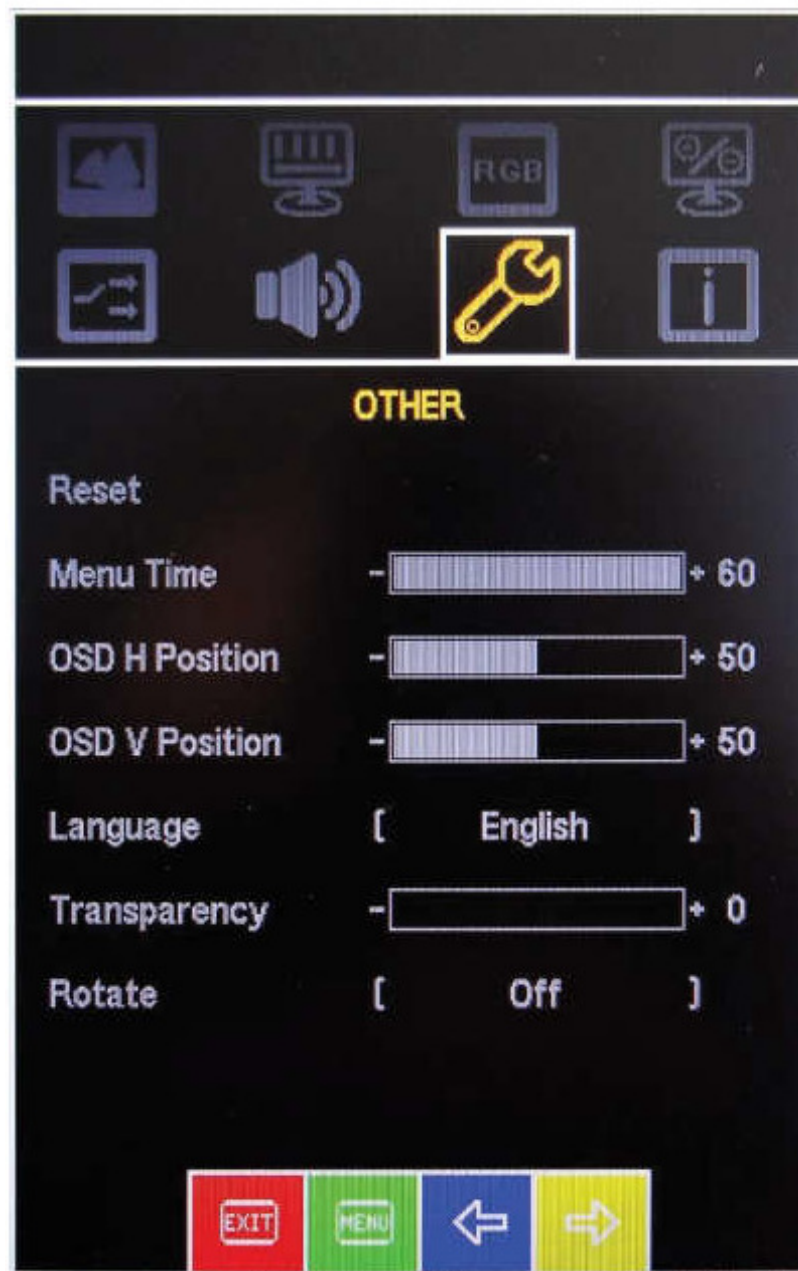


VGA: Select VGA as the input source

DVI: Select DVI as the input source

DP: Select DP as the input source

5.6 more settings



Reset:	Reset to factory settings
Menu Time:	Presentation time OSD menu
OSD H Position:	Horizontal adjustment OSD menu
OSD V Position:	Vertikaleinstellung OSD Menü
Language:	Language: German or English
Transparencey:	Transparency OSD menu setting
Rotate:	Turn OSD Menu On / Off

5.7 Information



Information about:

signal input

H and V frequency

clock speed

HDCP functional status

Firmware version

6 - Touch Screen

If the monitor is equipped with a resistive touch screen, the CD comes with the driver software for the touch screen.

When touched with a USB interface, the touch is powered by the PC.

The connection to the PC is made via a USB plug type A. The plug is located on the back of the monitor.

A connecting cable of 3 meters is included.

To install the driver software, insert the CD-ROM into the drive.

Do not connect the USB cable to the PC.

Enter D: \ Setup.exe and confirm with OK.

Instructions on the screen.

For USB interface: DMC, TSC-10 Series, select USB.

The driver software is now installed.

After completing the installation, connect the USB cable to the PC.

The New Hardware Installation Wizard appears.

When asked, "Connect to the Internet" - **NO this time** -

Select and select **Next**.

Click on "Install software automatically" and select **Next**.

When asking for verification - **continue installation** - select.

Select Finish.

Select Close.

The software and driver are now installed and the touch should be at fingertip react.

Calibrate Touch Screen Now (Start, All Programs, UPDD, Calibrate)

ATTENTION: If a different touch driver is installed on the PC, remove it completely from the PC before installation.

A not completely uninstalled driver can cause the touch does not work. If necessary, restart PC after installation.

7 - Monitor maintenance

Only clean the touch with a damp cloth!

DO NOT use a pressure washer.

Touch only with your fingers, do not use hard and sharp objects.

8 - Screensaver

Avoid displaying the same image over a long period of time.

Even with TFT monitors, this can lead to "burn in" the display.

It is called the "memory effect".

Therefore use a screensaver.

If a different picture is displayed for a longer time, the "Memory Effect" will disappear automatically.

9 - Safety

The operating voltage of the device may only be in the specified range.

The device complies with the requirements of the applicable European standards and EMC guidelines.

The front of the monitor is splash-proof.

There are ventilation slots on the back. These must remain free and it must be ensured that there is sufficient space for air circulation.

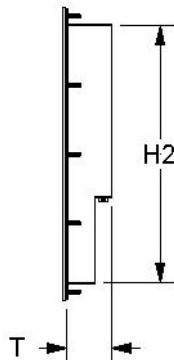
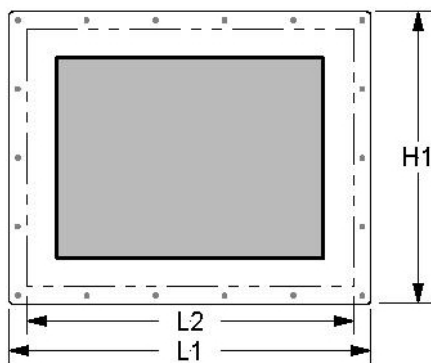
No objects should be put through the slots.

There must be no moisture or liquid in the monitor.

The monitor is not intended for use in hazardous areas.

10 - Mechanical dimensions

10.1 monitor with standard or stainless steel front plate



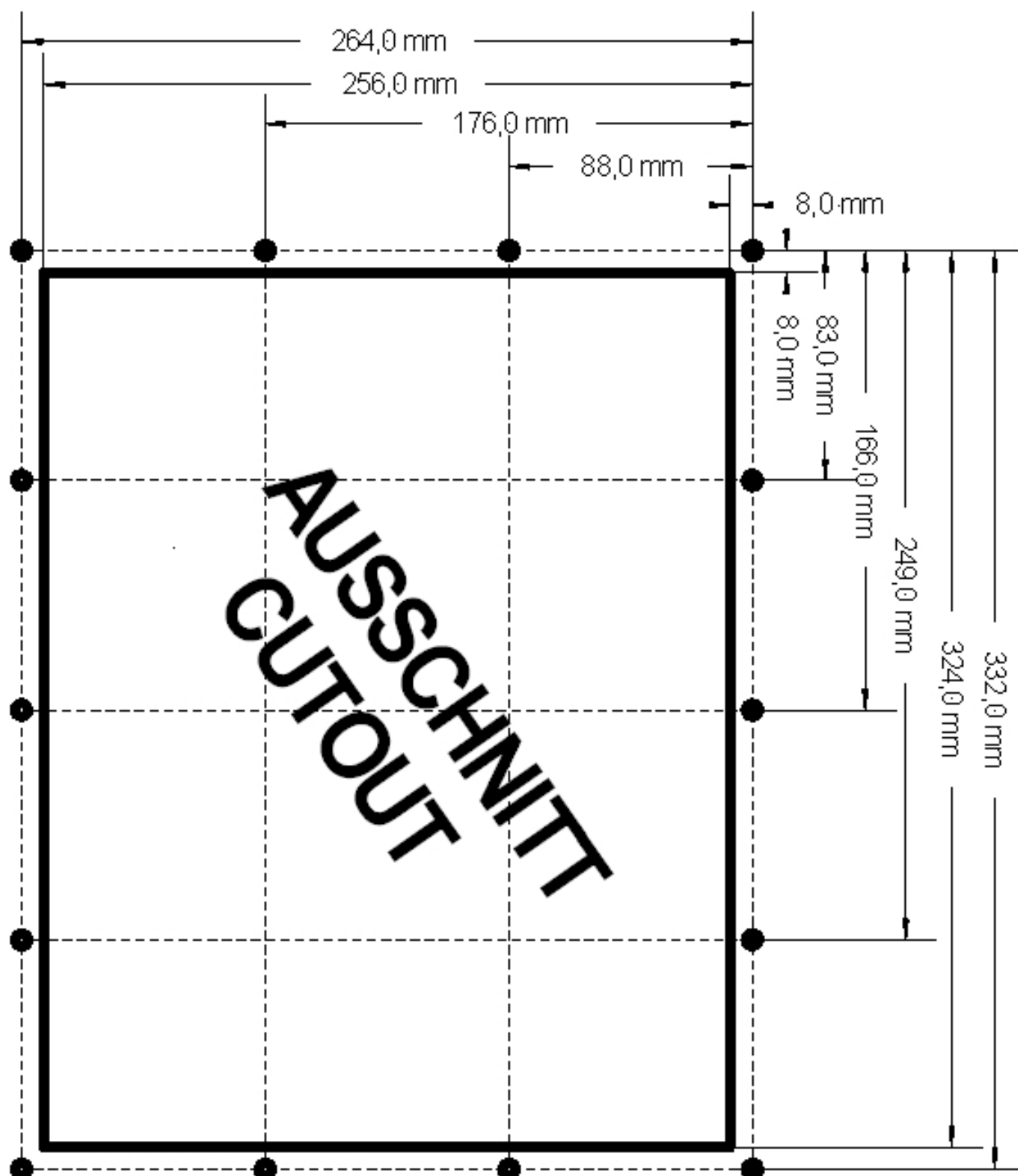
L1 = 348 mm
L2 = 314 mm
H1 = 280 mm
H2 = 246 mm
T = 55 mm

Front plate thickness = 3 mm

Cut Out: 316 x 248 mm

All dimensions in mm, technical changes reserved

11 - Front Panel Cutout Monitor with standard and stainless steel front panel



Front Panel Cutout Monitor 12,1 "
Hole = 6.5 mm

Notes:

