



Fig: As if it were a piece of you: 2-fold branding implemented easily!

Customizing...

... of your **machine**, **system** or **application** has never been so easy: The new **EZ12** HMI line is not only easy to program and assemble, it can also be personalized with your own logo and start screen.

#1

For this purpose, an insert for **your** company, division or machine **label** is provided in the **front frame**. The **logo** or designation is thus **protected** after installation and invariably safe in the device.



Fig: Label insert behind front panel

#2

Furthermore, not only in the project itself, but also in the **power-up screen**, your **logo** or that of your customer can be **integrated**. This makes each device even more individual and strengthens your brand in addition.

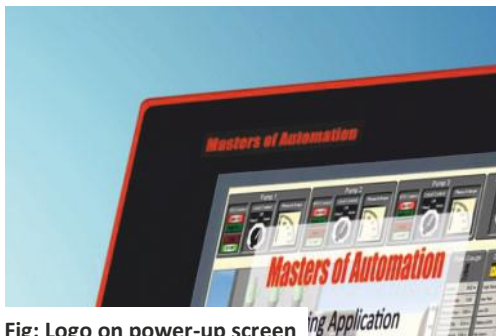


Fig: Logo on power-up screen

And more...

But also **assembly** has been made **even easier** and faster, because the mounting screws are now integrated with **swiveling brackets**

directly **in the device**. This means that the EZ12 can be securely **fastened** in the control cabinet or control panel in **seconds**, without losing anything or having to painstakingly search for it. All points, that predetermine these HMI devices especially for **OEMs/machine manufacturers**.

The EZ12 series is available in 4 sizes from **6 to 10 inches** screen diagonal.

Learn more about the new HMI, that is like a piece of you! >>

Everything, you might expect ...



Built-In Mounting Clips

Mounting screws and brackets are part of the unit itself. With no external mounting material required, Installation is done in seconds!



Limitless Communication

Want to have it all? Programming port, USB (A), USB (B), COM port, Micro SD slot, Ethernet — You name it!



Fig: The EZ12 series is available in 4 sizes from 6 to 10 inches screen diagonal.

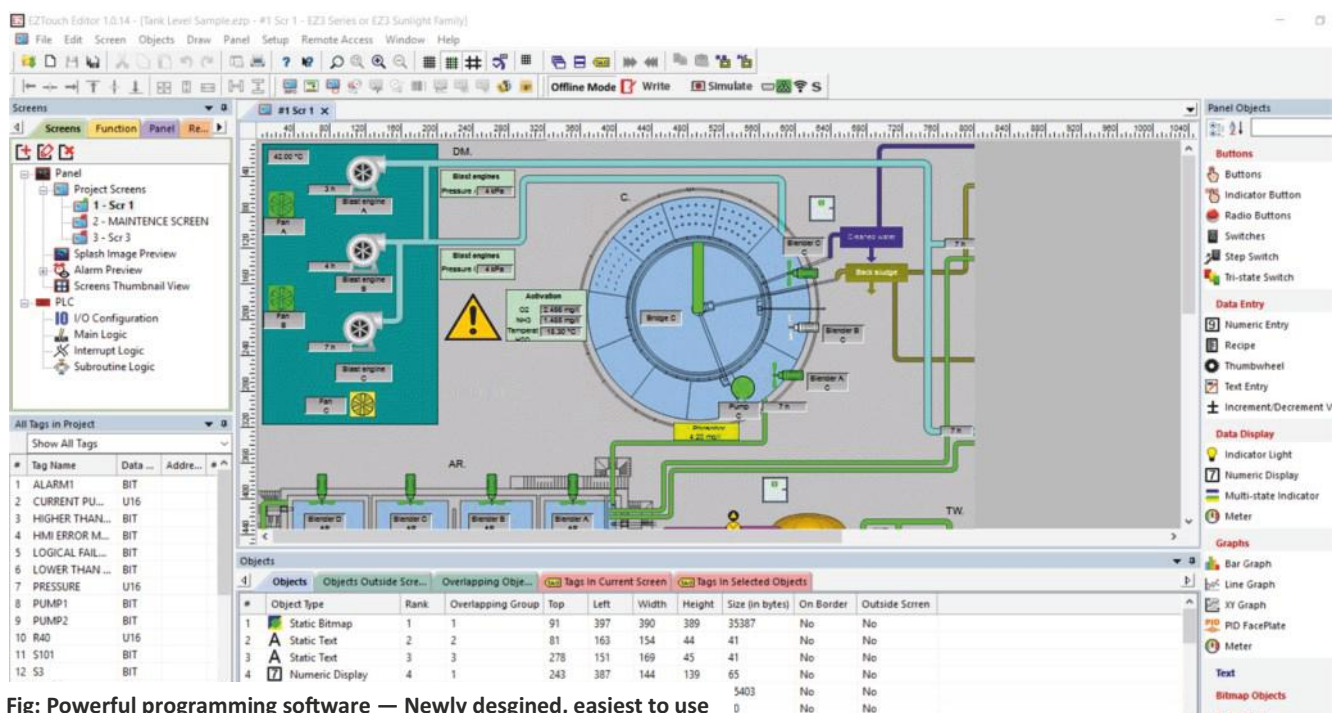


Fig: Powerful programming software — Newly designed, easiest to use

... and maybe more.

Connect To 95% Of All PLCs - 2 Brands At Once!

Via COM port or Ethernet you are able to connect to nearly every PLC worldwide. To name a few: Siemens Ethernet ISO over TCP/IP, Modbus TCP/IP, Allen-Bradley Ethernet/IP to ControlLogix and CompactLogix... And moreover: EZ12 lets you communicate to 2 different PLC protocols at once and exchange data between them!



2-Fold Customizing At Your Fingertips

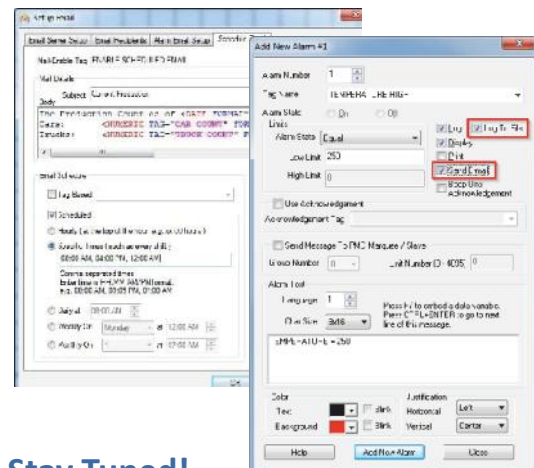
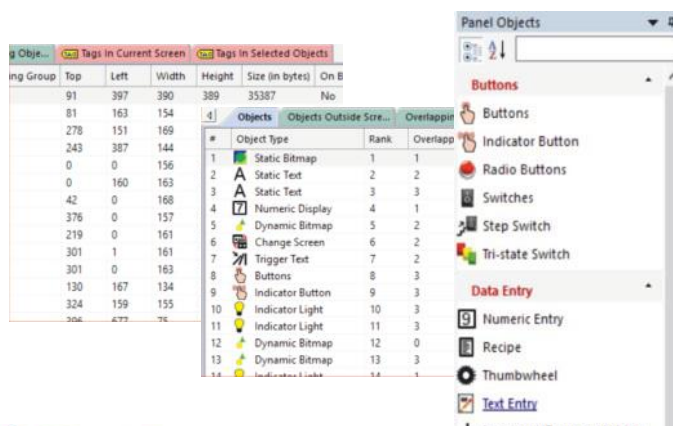
You want to strengthen your brand? Make the project your specific solution? Very easy with the new EZ12 line:

1. Place the printout of your company or project logo behind the front bezel, where it is perfectly protected.
2. Include your logo in the power-up screen, so everyone becomes aware of your brand right from the start.

Two powerful features, to make EZ12 a piece of you(rs)!

We Make Programmers Lives Easier

Design your screen in minutes, with easily accessible toolbars, object database, tag database and screen lists. You'll get numerous newly designed icons, a symbol library plus a built-in simulator. Hence, our software is well-prepared, to transform your ideas into reality!







Stay Tuned!

Log alarms on SD card, send case-sensitive emails to relevant people involved, keep track of production data via text messages. These and more features are already built-in. Just in case, you need to know, what's going on...



And how About The Price?

The HMI's themselves are very competitive priced. And with less than 100.00 Euro for the lifetime licence fee of the programming software, this series comes close to a no-brainer.

Specifications				
Type	EZ12-T6C-E	EZ12-T7C-E	EZ12-T8C-E	EZ12-T10C-E
				
Description	6" Color TFT customizable	7" Color TFT customizable	8" Color TFT customizable	10" Color TFT customizable
Protection Class	IP65 (front)			
Display Type	5.7" TFT 65000 Colors	7.0" TFT 65000 Colors	8.0" TFT 65000 Colors	10.0" TFT 65000 Colors
Display View Area	118 x 89 mm	165 x 100 mm	154 x 116 mm	211 x 158 mm
Resolution	320 x 240 px	800 x 480 px	800 x 600 px	800 x 600 px
Brightness/Life	400 cd/ 75.000 hours (even at extreme operating temperature)			
Backlight	White LED stripes			
Touch Screen	Analog resistive Touch Screen			
Service Power	24 VDC (20-30 VDC operating range) - 1.5A switching supply recomm.			
Operating Temperature	0 » +55° C (32 » +131° F)			
Power	Backlight OFF	8 Watts (24 VDC)		
	Backlight ON	15 Watts (24 VDC)	15 Watts (24 VDC)	18 Watts (24 VDC)
Storage Temperature	-25 » +65° C (-13 » +149° F)			
Relative Humidity	10 » 95% (non-condensing)			
Electrical Noise	NEMA ICS 2-230 showering arc ANSI C37.90a-1974 SWC Level C Chattering Relay Test			
Withstand Voltage	1000 VDC (1 Min.), between power supply input terminal and protect. ground (FG)			
Insulation Resistance	Over 20 MΩ, between power supply input terminal and protective ground (FG)			
Vibration	5 to 55 Hz 2G for 2 hours in X, Y und Z axes			
Shock	10G for under 12 ms in X, Y and Z axes			
# of Screens	Up to 999 (only limited by memory)			
Real Time Clock	Built into Panel (PLC clock still accessible)			
Screen Saver	Yes (Backlight off)			
Communication Ports	Download/Programming port: 9-pin D-Sub (Female) - RS232 PLC Communication port: 15-pin D-Sub (Female) - RS232/RS422/RS485 Ethernet on Board (10/100 Base-T) USB Type A: Programming/Data-Logging port USB Type B: Programming port Micro SD Slot: Data Logging			
External Dimensions	156 x 205 x 53 mm	156 x 205 x 46 mm	222 x 277 x 48 mm	270 x 345 x 46 mm
Weight	0,8 kg	0,8 kg	1,3 kg	1,7 kg

Technical Data Subject to Change

Customized Automation — Just Right For You!